

Urban Waters Federal Partnership

Jeffery Robichaud, USEPA

Presentation to MRBIR – August 2016

URBANWATERS

FEDERAL PARTNERSHIP

Restoring Urban Waters, Revitalizing Communities



[Anacostia Watershed \(DC/MD\)](#)



[Greater Philadelphia Area / Delaware River Watershed \(PA, NJ, DE\)](#)



[Meramec and Big River \(MO\)](#)



[Northwest Indiana Area \(IN\)](#)



[South Platte Watershed, Headwaters to Denver Metropolitan Area \(CO\)](#)



[Bronx and Harlem River Watersheds \(NY\)](#)



[Green-Duwamish Watershed \(Washington\)](#)



[Middle Rio Grande / Albuquerque \(NM\)](#)



[Passaic River / Newark \(NJ\)](#)



[Western Lake Erie Basin, near Toledo \(OH\)](#)



[Caño Martín Peña \(Martín Peña Channel, Puerto Rico\)](#)



[Lake Pontchartrain Area / New Orleans \(LA\)](#)



[Middle Blue River \(MO\)](#)



[Patapsco Watershed / Baltimore Region \(MD\)](#)



[San Antonio River Basin, within Bexar County \(TX\)](#)



[Grand River/Grand Rapids \(MI\)](#)



[Los Angeles River Watershed \(CA\)](#)



[Mystic River Watershed \(MA\)](#)



[Proctor Creek Watershed/Atlanta \(GA\)](#)

The Urban Waters Federal Partnership

Vision: “Through our Partnership, we will **revitalize urban waters and the communities that surround them**, transforming overlooked assets into treasured centerpieces and drivers of urban revival.”



Partnership Principles

- ❖ Promote clean urban waters
- ❖ Reconnect people to their waterways
- ❖ Promote water conservation
- ❖ Use water to promote economic revitalization
- ❖ Encourage community improvements through active partnerships
- ❖ Be open & honest; Listen to communities to learn.
- ❖ Measure success & evaluate to fuel future success

Steering Committee

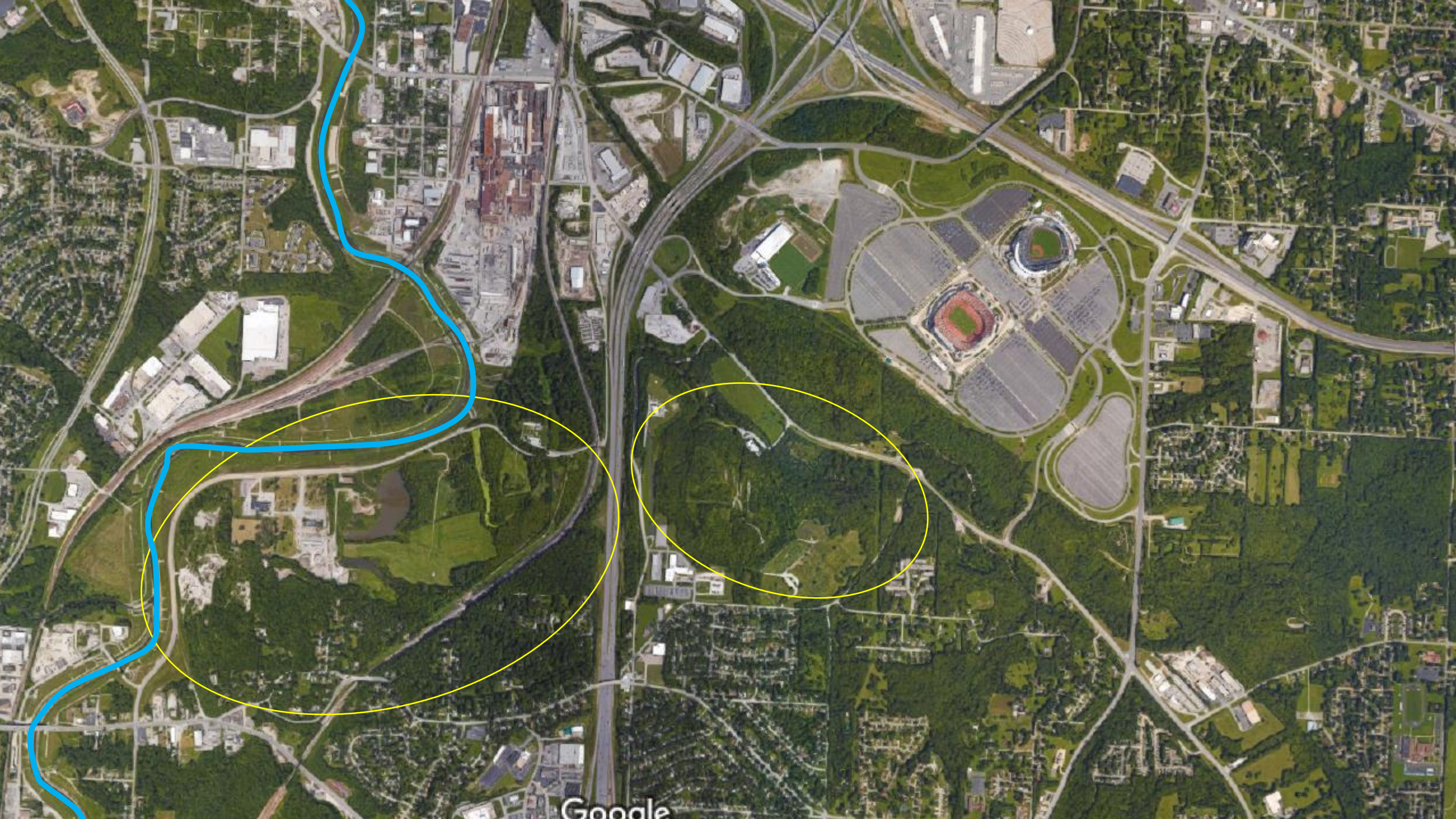
- Environmental Protection Agency
- United States Forestry Service
- USGS
- National Park Service
- Mid Americ Regional Council
- KC Water Services
- KC Planning
- KC Brownfields
- Kansas City Parks
- Missouri Department of Conservation
- Heartland Conservation Alliance

Middle Blue River Urban Waters Federal Partnership



A satellite map showing a river system. A blue outline traces a path through the landscape, starting from a small reservoir in the upper right and moving southwards. The surrounding area is a mix of green fields, some urban development, and a large, winding river channel. The text 'Blue River' is overlaid in a large, bold, blue font on the right side of the map.

Blue River



Google



Bottomland Woodland

Native Edibles
(to be completed by others)

Bottomland Woodland
(Potential Urban Agriculture - 2.41 Ac.)

ROUND GROVE CREEK

BLUE RIVER

Stream and Riparian Restoration

COAL MINE RD

Water Level Control Structure

Reconnect Stream to Wetland

Stream & Riparian Restoration

Riparian Buffer

Native Grasses
(to be completed by others)

BRUSH CREEK

Riparian Restoration

Public Use Area

Open Water

BoysGrow Farm

BoysGrow Farm

Maintenance Access
(Outdoor Classroom)

Viewing Platforms

Marsh

Forebay

Open Water

Reptile/Amphibian Pool
(Outdoor Classroom)

Deerweed Grasses with Legumes
(to be completed by others)

Bottomland Woodland

Mesic Prairie Buffer

Wet Meadow

Upland Forest Restoration
(to be completed by others)

INTER

**Is there an
opportunity here?**

NEW NATIONAL STRATEGIC WORKPLAN

I **STRENGTHEN THE NATIONAL CROSS-PROGRAM STRUCTURE.**

Ensure that the 14 Federal agencies, 19 Partnership Locations and supportive Non-Governmental organizations are working in tandem.

II **EXPAND RESOURCES FROM PARTNER AGENCIES.**

Ensure that all Federal Partners of the Federal Partnership strive to contribute to the national resources used for the effort and all resources are used in a most effective way.

III **INCREASE ACCESSIBILITY OF THE FEDERAL PARTNERSHIP.**

Ensure the best approaches implemented by the current 19 Partnership Locations are exported to any urban location across the country, optimizing utilization of federal resources.

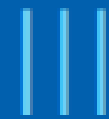
IV **ENHANCE QUALITY OF COMMUNICATIONS AND OUTREACH.**

Ensure that all work nationally and at the Partnership Locations, and best information from many other sources, are provided to all interested audiences nationwide.

V **MEASURE AND COMMUNICATE RESULTS.**

Ensure the national story of the Federal Partnership is being told using key quantitative and qualitative measures adopted by the Federal Partnership.

VI **LEVERAGE RESEARCH TO ASSIST URBAN WATERS PARTNERSHIPS.**

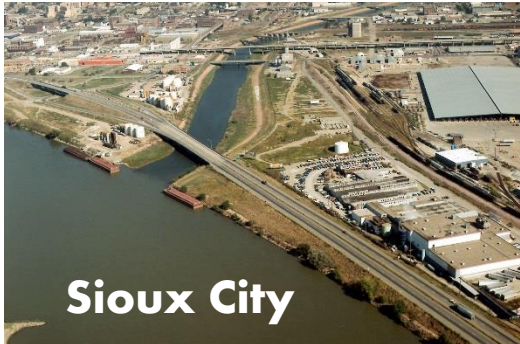
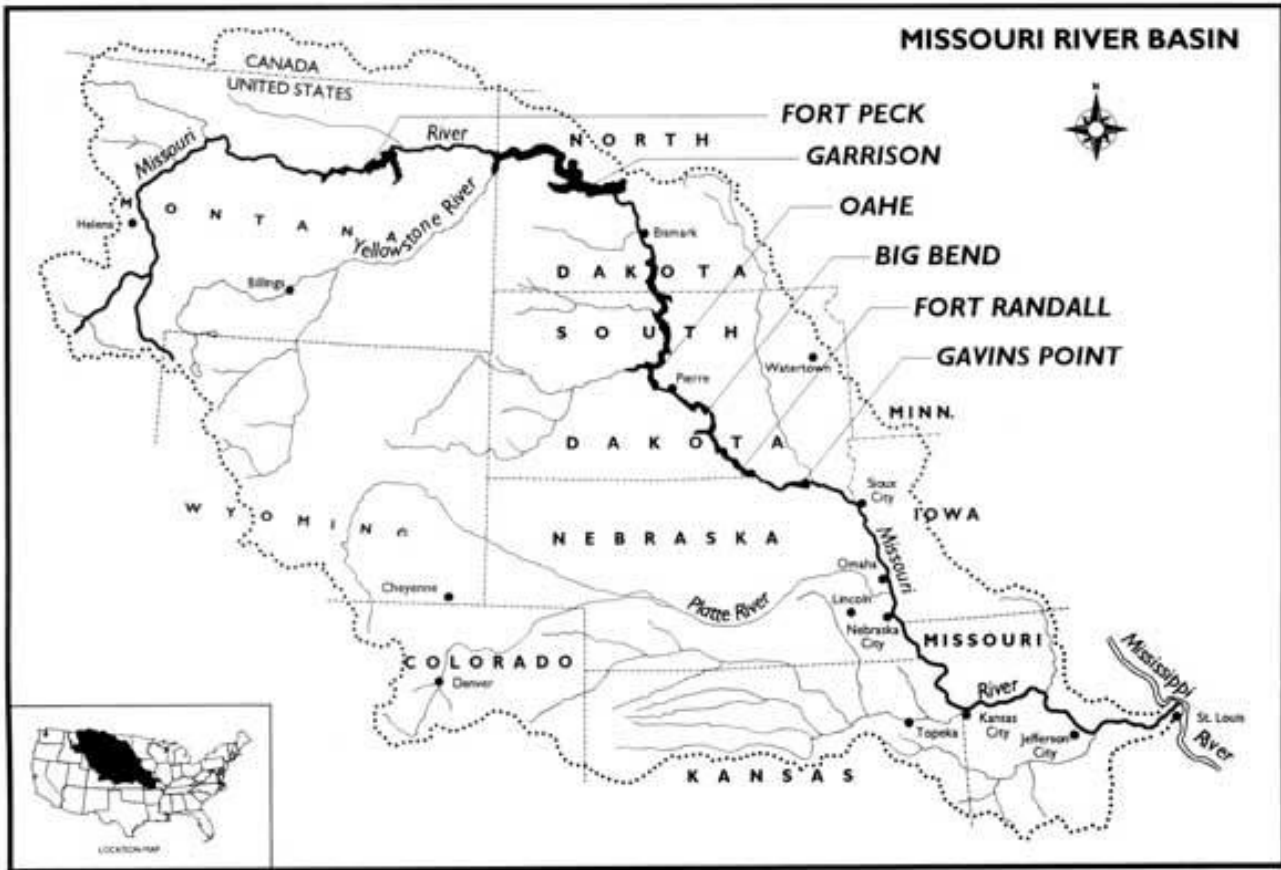


Increase Accessibility of the Federal Partnership and its Program Actions to Any Location with Urban Waters, Nationwide



B. ESTABLISH A NATIONAL PROCESS FOR NEW LOCATIONS AND ORGANIZATIONS TO AFFILIATE WITH THE FEDERAL PARTNERSHIP.

Develop and implement a process, beginning with a pilot phase, for state and local governments as well as for private organizations that: (1) maximizes the number of urban locations creating successful Urban Waters Partnerships; (2) provides tangible assistance from Federal agencies to any new Urban Waters Partnership; and (3) assists all entities in a new Urban Waters Partnership to band together, share resources and avoid duplication. This process would maximize use of available federal expenditures.



**Is this worth
exploring next
meeting?**